

~ INSTRUCTION MANUAL ~

This document to be used with
Hurley Davits



WARNINGS

WARNING - Failure to install, maintain, protect, and operate the system properly can cause malfunction resulting in possible serious or fatal injuries and / or property damage.

WARNING - Davit system is not intended to be used with any person(s) and / or possessions in the dinghy.

WARNING - Do not attempt to operate system while boat is under power.

WARNING - System should not be placed in an area where the prop, outdrive or any other mechanical part may come in contact.

WARNING - Remove drain plug from tender when on davit.

WARNING - Do not drill holes in your davit or alter in any way.

WARNING - Only use stainless steel hardware when mounting and use a backing plate when applicable.

WARNING - Dinghy must be secured / tied down before transporting.

WARNING - Contact the manufacturer of your swim platform to ensure that it is able to handle the added weight.

WARNING - Regular inspection, adjustment, and maintaining your davit and other associated components is necessary to ensure proper operation.

WARNING - If used in a corrosive environment, the davit should be cleaned with fresh water as all metals should to maintain longevity.

CAUTION: - It is suggested to off-set the davit, during installation, on the platform so that the stern of the dinghy is more supported due to weight of motor, etc.

CAUTION - Weight limit: 350 pound safe working load limit using the 6, 8 or 10 inch mounts.
Do not exceed weight load limit.

Your *Hurley Dinghy Davit* system is made of high-grade aircraft aluminum with a durable e-coat, powder coat, stainless steel fasteners and hardware. The skid-plates are made of Polyethylene and will allow for easy scuff-free maneuvering.

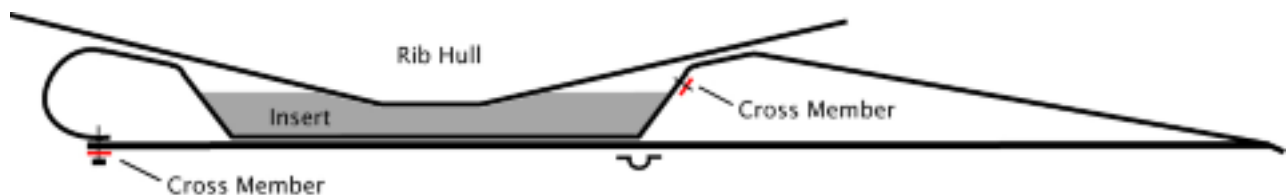
The two cross members and mounts are to be assembled as shown in the diagram using the supplied nuts and bolts. Match labeled components "A" to "A" & "B" to "B". Make sure mounts are properly aligned.

If you have ordered a polyethylene "RIB INSERT", scribe a line on the insert using a marker pen. Turn your rib up side down, lay your davit in the place you plan to mount the davit and evenly transfer the keel pattern to the insert with your marker. Be sure not to cut deeper than the resting pads. Cut the insert by using a hacksaw, coping saw, band saw, etc. for an exact fit for your hardbottom rib. Sanding of Rib Insert can be used to cleanup saw marks.

Carefully plan your installation before you perform the installation. *Measure twice, drill once!* You may want to off-set the davit on the platform so that the stern of the dinghy is more supported due to weight of motor, etc. Of course this depends on the beam of your boat, length of your dinghy and any obstructions.

Due to the many different applications, the items used to fasten the mount to the swim platform are not included as well as a tie down system. It is suggested to use: 3M 5200 sealant to seal drilled holes; counter sunk stainless steel bolts (at least 1/4"); and fender washers or backing plates when applicable. Remember to tie down your dinghy for transporting, we recommend a ratchet or cam strap system. If you have any questions during your installation, feel free to call us.

Every effort has been made to produce the most durable, long-lasting system possible. However, certain components are subject to wear and tear. Inspection and tightening of nuts and bolts is encouraged frequently.



Match labeled components "A" to "A" and "B" to "B"

LIMITED WARRANTY AND LIMITATION OF LIABILITY

All new products manufactured and marketed under Hurley Marine, Inc., are warranted to be free from defects in material and workmanship under normal and proper use for a period of (1) one year from date of shipment from Hurley Marine, Inc. No claim for breach of warranty will be allowed unless the material or workmanship is found defective within the warranty period, properly documented by buyer and Hurley Marine, Inc. is notified in writing within 10 days from failure. This warranty shall not apply to products that have been disassembled, altered, or utilized in a manner not approved by Hurley Marine, Inc. or subjected to abuse, misuse, improper maintenance, negligence or accident.

CUSTOMER AGREES THAT USE OF THE PRODUCT/SERVICE IS ENTIRELY AT CUSTOMER'S OWN RISK. THE FOREGOING WARRANTIES ARE EXCLUSIVE AND ARE ACCEPTED BY BUYER IN LIEU OF ANY AND ALL OTHER WARRANTIES, EXPRESSED OR IMPLIED, INCLUDING WITHOUT LIMITATION THE IMPLIED WARRANTIES OF MERCHANTABILITY OR FITNESS FOR PARTICULAR PURPOSE. Buyer's sole remedy in the event of a breach of the forgoing warranties is the repair or replacement of the affected product by Hurley Marine, Inc., upon the return of the product transportation charges prepaid to Hurley Marine, Inc., and after a charge to buyer for the use of the product prior to its return. BUYER AGREES THAT IN NO EVENT WILL HURLEY MARINE, INC'S LIABILITY FOR ALL LOSSES FROM ANY CAUSE, WHETHER BASED ON CONTRACT, NEGLIGENCE, STRICT LIABILITY, OTHER TORT OR OTHERWISE, EXCEED BUYER'S NET PURCHASE PRICE, NOR WILL HURLEY MARINE, INC, BE LIABLE FOR ANY SPECIAL, INCIDENTAL CONSEQUENTIAL OR EXEMPLARY DAMAGES.

The foregoing warranties will continue in effect for so long as the product is serviced and maintained in accordance with Hurley Marine, Inc. instructions and with genuine Hurley Marine, Inc. manufactured replacement parts. These warranties may not be altered or amended except by a written instrument signed by buyer and a duly authorized officer of Hurley Marine, Inc. For warranty or service assistance contact your Hurley Marine, Inc. dealer. Be sure to register your product at: http://www.hurleymarine.com/Product_Reg_Form.html

TERMS OF SALE / SHIPPING

RETURN POLICY: If you are dissatisfied with your purchase, contact us within 30 days from the date of product purchase. Products returned within 30 days of their receipt, unopened in their original packaging and otherwise in new condition will automatically be exchanged or refunded. A minimum fee of 25% of the price of the product will be charged for inspection, repacking and restocking for items not returned in their original condition. Other fees may apply depending upon the condition of the item. Products are not returnable after 30 days.

EXCHANGE / REFUND PROCEDURE:

- All returns must have a Return Authorization number. Contact place of purchase for a Return Authorization number.
- Properly repack the product in the original packaging and place inside a box suitable for shipping with all the original enclosures, parts, and accessories.
- The Return Authorization number must be on the box next to the shipping address.
- Return it with **original receipt** and postage pre-paid (we do not accept C.O.D.), add appropriate insurance.
- Shipping and packing fees are non-refundable.

Non-Returnable items: Inflatable boats, installed/mounted items, damaged goods, clearance/discount items, used and/or display items, electrical goods, light bulbs and special ordered items are not returnable, unless defective, and then for repair/replacement only. If the product is defective you must call Hurley Marine, Inc. within 10 days of receipt of the product.

DAMAGES GOODS: We thoroughly inspect all items prior to shipment. We suggest that you also thoroughly inspect the item(s) before accepting delivery. If damage is apparent, refuse delivery or if your parcel is left without a signature and damage is found contact the carrier immediately. Do not discard the box or any packaging materials. Most claims must be filed with the carrier within 10 days of receipt of delivery. Although we take special care to ensure the safe arrival of your merchandise, our responsibility for damage ends when the carrier accepts shipment.

Hurley Marine, Inc. • 1125 Lake Shore Drive • Escanaba, MI 49829 USA
906. 553.6249 • info@hurleymarine.com • www.hurleymarine.com